



www.eul.edu.tr

THE INTERNATIONAL OFFICE
THE EUROPEAN UNIVERSITY OF LEFKE
GEMIKONAGI - LEFKE, TRNC
Via MERSIN 10
TURKEY

Tel: +90 392 660 20 00 / Fax: +90 392 660 23 43
intoffice@eul.edu.tr
<http://www.eul.edu.tr/en/>

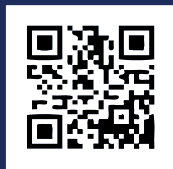


European University of Lefke | Lefke Avrupa Üniversitesi



EUROPEAN
UNIVERSITY
of
LEFKE

"The right choice to be a step ahead"



North Cyprus



North Cyprus is a place of magic; fully deserving the title “Pearl of the Mediterranean”. It has a rich and colourful tapestry of unspoilt natural beauty that ranges from golden beaches sparkling crystal clear water to fields of carpeted wild flowers and the pine clad heights of the “Beşparmak Mountains” that runs for approximately 160 km (100 miles) along the northern coast of the island. Cyprus covers an area of 9,251 km² and is the 3rd largest island (after Sicily and Sardinia) in the Mediterranean Sea.

The island enjoys an intense Mediterranean climate with long, warm and dry summers from mid-May to mid-October. The winters are mild and sometimes rainy, lasting from December to February. Summers and winters in Cyprus are separated by short autumn and spring seasons.



EUROPEAN UNIVERSITY OF LEFKE

“The right choice to be a step ahead”

The European University of Lefke is a non-profit university founded in 1990 by the Cyprus Science Foundation. The philosophy of EUL is “science and education are universal in our age”. EUL provides a broad range of contemporary education and is committed to maintaining international standards of excellence with all its degree programmes, which are accredited and recognised by higher education authorities around the world.

EUL is an international university with a population of more than 5,000 students from 44 different countries and has distinguished and experienced academic staff from around the world. EUL offers 11 Associate, 36 Undergraduate and 17 Master’s Degrees. There are research opportunities provided by 7 PhD programmes. The medium of instruction is English. There are dedicated courses available which are taught in Turkish.

The primary aim of EUL is to be a high quality university which conforms to European and International standards. Its mission is to produce graduates who are equipped to be competent, self-confident, contemporary, creative and independent individuals. EUL alumni can cope with the challenges of global demands and contribute to regional and international development.

The European University of Lefke is accredited by the Higher Education Council of the Republic of Turkey (YÖK), which provides international recognition.



The Vibrant Tones of Orange, Green and Blue Await Students to the Town of

LEFKE

Lefke is in the greenest corner of the island, with its citrus groves, its rich and varied culture and history, which is an oasis of peace and calm. The European University of Lefke is situated between the sea and the mountains of the beautiful town giving spectacular views from all areas of the campus.

There are countless cultural activities and events that occur throughout the year in Lefke in which students can participate. There are also many shops, cafés and restaurants within a 10 minute walking distance from the EUL campus. Students can eat, drink, or read at seaside cafés and restaurants, or shop along the main road of this friendly town.



Reasons to Study @ EUL EUROPEAN UNIVERSITY OF LEFKE

- Internationally recognised university
- Diverse and strong academic programmes
- Large number of international academic staff
- Low tuition fees, low cost accommodation and cost of living
- Non-profit university which is student and employee friendly
- Small classes and a low student-academic staff ratio
- On / off campus modern accommodation
- Guidance, orientation and consultancy services
- Scholarship and work experience opportunities
- Safe and secure environment
- Warm and friendly atmosphere
- Ideal location and excellent climate
- Great sports facilities on campus



International Accreditations & Memberships

Accreditations:

- Higher Education Council of Turkey (YÖK)
- Higher Education Planning, Evaluation, Accreditation and Coordination Council of North Cyprus (YÖDAK)

Memberships:

- International Association of Universities (IAU)
- International Universities Council (IUC)
- American Council on Education (ACE)
- UK National Academic Recognition Information Centre (UKNARIC)
- Federation of the Universities of the Islamic World (FUIW)

ACCOMMODATION

The On Campus accommodation is within walking distance of the lecture halls and rooms are designed for three students. All rooms have study tables, closets, a small refrigerator, telephone, ensuite bathroom and air conditioning. Off campus accommodation opportunities are available around campus and Lefke.

Campus Dormitories

Facilities Available:

- Wi-Fi
- 24 hour security
- Kitchen, study room and TV room on each floor
- Telephone for incoming calls
- TV socket in each room (for students who want to purchase a TV for their personal use)
- Self-serve laundry room



HEALTH CENTRE

Our health centre is located on the first floor of the Sports complex. The university ambulance is also on 24 hour standby to transport patients to the nearest hospital which is located within a 10 minute drive from the University.

The Health Centre offers basic health services such as patient examination, vaccinations, stitching up and dressing of minor wounds. Where necessary, patients can be kept under observation at the health centre.



CAFÉS AND RESTAURANTS

Gourmet Restaurant, Café Express, Vitamin Café, Mado, Café Zone, Orta Café and Nokta Café are major cafés and restaurants located on campus, which offer a wide range of quality and tasty menus for students at reasonable and affordable prices.



EUL FROM OUR STUDENTS PERSPECTIVE



Assel from Kazakhstan is a Senior Year student studying in the International Relations Undergraduate Degree Programme.

'Being a smaller university, the tutors and lecturers are able to tailor their time with the students more effectively which I like as it has improved my learning experience. I have gained so much here at the University and have made many friends from different parts of the world that will last me a lifetime. Cultural Diversity is in the nature within my area of study and surely being an International Student at EUL has given me the opportunity to broaden my horizons within this aspect.'

Abdullah from Indonesia is a Freshman student studying in the Gastronomy Undergraduate Programme.

"Travelling to North Cyprus was my first experience travelling abroad. Our University has offered me the programme of my dreams "Gastronomy". EUL is located on the West coast of the island and lays between extraordinary green mountains and the fascinating Mediterranean Sea. The University is compact and has a lot to offer to its' students. As this is my first year in the university I am very touched by the welcoming gesture of the staff and fellow schoolmates. The Environment is very pleasant and friendly. I got to meet students from different parts of the world as my passion is learning cuisines from different cultures; I believe that I have made the "RIGHT CHOICE" and I look forward to spending four valuable and memorable years here at EUL."



Josephine is from Ghana and is enrolled in a Postgraduate Degree Programme.

"I have been here for more than five years. I completed an Undergraduate Degree Programme at the European University of Lefke and decided to continue to a Postgraduate Degree in International Relations. The campus has everything a student can need and more. I am proud to say that I am also working as a Full-time Assistant in the International Office which has been so far a very effective experience for me. I have come to know so many people from so many parts of the world and I am continuously learning not only through my academics but through "Hands on Experience". I can honestly say EUL has been a great benefit to my life and I will soon be ready to cope with all the challenges of career hood."



SPORTS COMPLEX

The sports complex, established within the European University of Lefke, aims to provide students with the opportunity to have a healthier and active lifestyle whilst enriching their campus experience.

Students can join different sport activities at various facilities:

- Main Hall (a multi-purpose indoor sports area equipped with high standard sports equipment)
- Fitness centre
- Gym
- Squash Hall
- Studio 1 (Step and aerobic dance)
- Studio 2 (Taekwondo, Judo, Wrestling, Dance and Table tennis)
- Open tennis courts
- Synthetic football pitch
- Open basketball fields



TRANSPORTATION

Access to and from the university is possible through regular bus services. There are daily free bus services to Güzelyurt, Lefke, Yedidalga and Gemikonağı almost every hour.



LABORATORIES

European University of Lefke offers a modern campus with state of the art facilities and a practice-based universal education through top of the line laboratories along with the help of academicians.

- Studios and Workshops
- Gastronomy Kitchen
- Electrotherapy Unit
- Anatomy Laboratory
- Nursing Skills Laboratory
- Rehabilitation Centre
- Exercise & Manipulative Therapy Unit
- General Laboratory
- iMac Design Studio
- Soil Mechanics Laboratory
- Materials of Construction Laboratory
- Hydraulics and Fluid Mechanics Laboratory
- Microwave Laboratory
- Computer Network Laboratory
- Electronic Communications Laboratory
- Power Electronic Laboratory
- Digital Electronic Laboratory
- Radio and TV Studios



ENGLISH LANGUAGE TEACHING

The European University of Lefke has an English Preparatory School which teaches a full range of English language courses to preparatory, undergraduate and postgraduate students for a duration of one year. This is to prepare them for the academic skills and knowledge they will acquire during their studies.

The Preparatory School is there to improve students writing, listening, reading and speaking skills in English which is crucial for their success on academic courses that are taught in English. The highly qualified teachers have made it their priority to provide the necessary support to our students, to help them improve their English language skills.



LIBRARY

The Library Building, which is a 2,500 m² building houses seating for 300 people. The Library consists of group study rooms, seminar room for 50 people, computer lab and quiet study spaces. There are a variety of printed publications and books as well as digital books and e-sources available. The library also receives daily local and international newspapers.

The European University of Lefke's Library is organised according to the Dewey Decimal System. The library subscribes to many online and electronic databases, allowing students to access updated information easily.



The mission of the Dean of Students Office is to assist EUL students in every step of their university life. There are several units that run under the Dean of Students Office and each unit is specially designed for the well-being of EUL students.

The Students Services Unit
The Career Centre

The Social and Cultural Activities Unit
The Student Development and Psychological Counselling Centre

Student Clubs

Student clubs are there to support student satisfaction and to promote social & cultural diversity. Being part of a student club not only enhances student lifestyle on and off campus, but also helps development in the areas of communication skills, management skills, time management, analytical thinking and more. EUL students are entitled to become a member of any club and each club has its own committee which operates under the Dean of Students Office.



International Student Club

International Student Club is especially designed for the international student body. The main purposes of the club are:

- To ensure the unity and cooperation among international students in a social, cultural, academic and sports context
- To supervise and improve cooperation in relevant fields, between international students of EUL and their fellow students
- To become active members of EUL student community

Orientation Week

Orientation week is one of the most important weeks for freshmen students on campus. It aims to help new students navigate their way through the necessities of university life. Orientation week starts from the moment the student arrives until the first classes commence. It is filled with various seminars, on and off campus activities and is a perfect way to meet with fellow students who are also adjusting to their new surroundings.



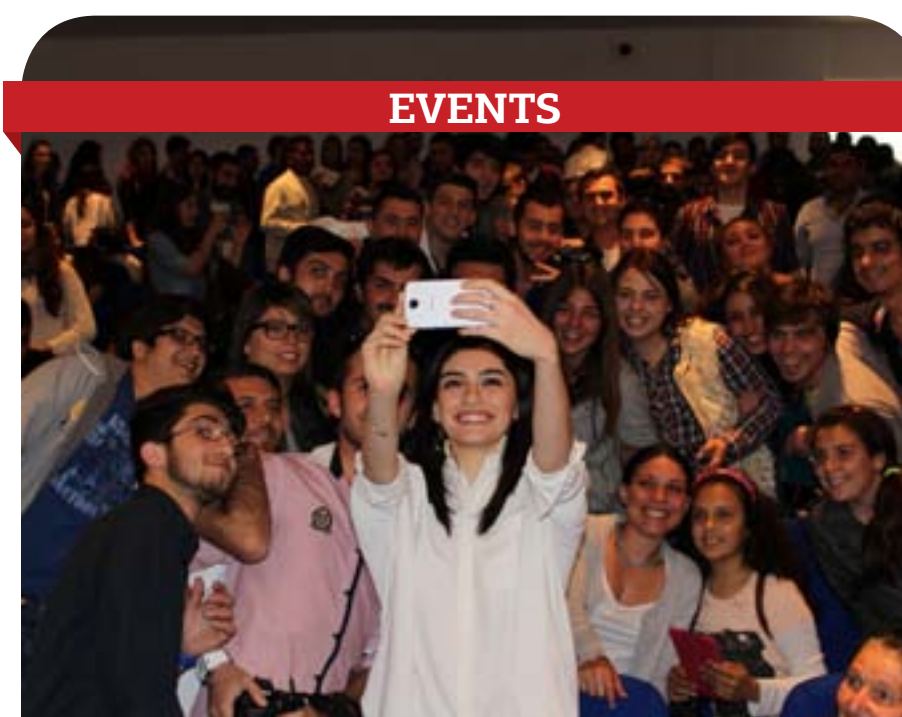
Spring Festival

EUL provides students with the opportunity to develop their social and emotional intelligence, to catch the spirit of today's world and contribute to its history and development through social activities. In support to this belief, Spring Festival is organised annually at the University. At these festivals, students are encouraged to participate in social, cultural and sports activities with students of different backgrounds, together with academic and administrative staff. The Spring Festival is a perfect way to release students from the tension they may face from their Academic Studies while enjoying days of fun-filled activities, music and dance.

CONCERTS



EVENTS



UNDERGRADUATE PROGRAMMES

FACULTY OF AGRICULTURAL SCIENCES AND TECHNOLOGIES

	Years	Degree
Horticultural Production and Marketing	4	B.Sc

FACULTY OF ARCHITECTURE

Architecture	4	B.A.
Architecture *	4	B.A.
Interior Architecture	4	B.A.
Interior Architecture*	4	B.A.
Landscape Architecture	4	B.A.

FACULTY OF ARTS AND SCIENCES

History *	4	B.A.
Psychology *	4	B.A.
Turkish Language and Literature *	4	B.A.

FACULTY OF COMMUNICATION SCIENCES

Public Relations and Advertising *	4	B.A.
Radio-TV-Cinema *	4	B.A.
Visual Communication Design *	4	B.A.

FACULTY OF ECONOMICS AND ADMINISTRATIVE SCIENCES

Banking and Finance	4	B.A.
Business Administration	4	B.A.
Economics	4	B.A.
International Relations	4	B.A.
Public Administration	4	B.A.

FACULTY OF EDUCATION

Classroom Teaching *	4	B.A.
Computer and Instructional Technology Education *	4	B.A.
English Language Teaching	4	B.A.
Guidance and Psychological Counselling *	4	B.A.
Mentally Handicapped Teaching *	4	B.A.
Pre-School Teaching *	4	B.A.
Special Education Teaching *	4	B.A.

FACULTY OF ENGINEERING

Civil Engineering	4	B.Sc
Civil Engineering *	4	B.Sc
Computer Engineering	4	B.Sc
Computer Engineering *	4	B.Sc
Software Engineering	4	B.Sc
Electronics and Communication Engineering	4	B.Sc
Electrical and Electronics Engineering	4	B.Sc
Electrical and Electronics Engineering *	4	B.Sc

FACULTY OF HEALTH SCIENCES

Health Management	4	B.Sc
Nutrition and Dietetics *	4	B.Sc
Physiotherapy and Rehabilitation *	4	B.Sc
Social Work *	4	B.Sc

FACULTY OF LAW

Law *	4	B.A.
-------	---	------

SCHOOL OF APPLIED SCIENCES

Management Information Systems	4	B.Sc
--------------------------------	---	------

SCHOOL OF HEALTH

Health Management *	4	B.A.
Nursing *	4	B.A.

SCHOOL OF TOURISM AND HOTEL MANAGEMENT

Gastronomy	4	B.A.
Tourism Management	4	B.A.

ASSOCIATE PROGRAMMES

ADVANCED VOCATIONAL SCHOOL

	Years	Degree
Advertising and Public Relations *	2	A.Degree
Business Management	2	A.Degree
Computer Programming	2	A.Degree
Construction Technologies	2	A.Degree
Radio and TV Programming *	2	A.Degree
Visual Communication *	2	A.Degree
Culinary Arts *	2	A.Degree

VOCATIONAL SCHOOL OF JUSTICE

Justice *	2	A.Degree
-----------	---	----------

VOCATIONAL SCHOOL OF HEALTH SERVICES

First and Emergency Aid *	2	A.Degree
Medical Documentation and Secretarial Services *	2	A.Degree
Medical Laboratory Technician *	2	A.Degree
Physiotherapy Technician *	2	A.Degree
Medical Imaging Techniques *	2	A.Degree
Surgery Services*	2	A.Degree
Radiotherapy *	2	A.Degree
Dialysis *	2	A.Degree
Anesthesia *	2	A.Degree
Opticianry *	2	A.Degree
Home Care Services *	2	A.Degree
Elder Care *	2	A.Degree
Disabled Care and Rehabilitation *	2	A.Degree
Child Development *	2	A.Degree

POSTGRADUATE PROGRAMMES

INSTITUTE OF GRADUATE STUDIES AND RESEARCH

Master's Programmes

	Years	Degree
Business Administration	1-2	MBA
Political Science and Public Administration *	1-2	M.A.
International Relations	1-2	M.A.
International Economics and Finance	1-2	M.A.
Architecture	1-2	M.A.
Health Management*	1	M.A.
English Language Teaching	2	M.A.
Guidance and Psychological Counseling*	2	M.A.
Special Education Teaching *	2	M.A.
Education Administration and Supervision *	2	M.A.
Communication Sciences *	2	M.A.
Nutrition and Dietetics *	2	M.A.
Physiotherapy and Rehabilitation *		M.A.
Social Work*		M.A.
Nursing*		M.A.
Civil Engineering	2	M.Sc
Computer Engineering	2	M.Sc
Electrical and Electronics Engineering	2	M.Sc
Horticultural Production and Marketing	2	M.Sc
Management Information Systems	1-2	M.Sc
Environmental Sciences	1-2	M.Sc

Ph.D. Programmes

	Years	Degree
Architecture	4	Ph.D.
Business	4	Ph.D.
Communication Sciences *	4	Ph.D.
Computer Engineering	4	Ph.D.
Horticultural Production and Marketing	4	Ph.D.
Education Management *	4	Ph.D.
Guidance and Psychological Counseling *	4	Ph.D.
Public Administration	4	Ph.D.
Electrical and Electronics Engineering	4	Ph.D.
Civil Engineering	4	Ph.D.

*: The medium of instruction is Turkish.

INTERNATIONAL OFFICE

The International Office is the first and main contact point for prospective international students with regard to admission and enrolment at the European University of Lefke.

The core activities of the International Office include processing applications for international students coming to EUL (student recruitment); providing guidance on international qualifications, applications & enquiries, establishing international links & partnerships. It also acts as the main body for implementing, coordinating and facilitating the recognition and accreditation processes of the European University of Lefke on a global level and conducts marketing activities and liaises with our international network of agents who are there to support potential students for EUL.

APPLYING TO EUL

How and When to Apply :

EUL has two intakes each academic year. The first intake is for the Fall Semester (September) and the second intake is for the Spring Semester (February).

Required documents for Undergraduate Applicants:

- A completed EUL undergraduate application form
- A copy of a valid passport, ID card or birth certificate
- Copies of higher secondary school certificate/diploma
- Certified copies of English translation of all qualifications

Required documents for Ph.D. Applicants:

- A completed EUL postgraduate application form
- A copy of a valid passport, ID card or birth certificate
- Official university transcripts
- Attested copies of diploma/degree certificates
- Certified copies of English translation of all qualifications

Required Documents for Master Applicants:

- A completed EUL postgraduate application form
- A copy of a valid passport, ID card or birth certificate
- Official university transcripts
- Attested copies of diploma/degree certificates
- Certified copies of English translation of all qualifications

**For more information
Contact us**

intoffice@eul.edu.tr

SCHOLARSHIPS & SUPPORT

As a non-profit university, the European University of Lefke offers a wide range of scholarship opportunities that have become a great incentive for students.

EUL grants a **40%** tuition fee scholarship for Undergraduate programmes and **50%** for Master programmes. This is offered exclusively to **new** International students who enroll for the academic year 2015-2016.

Sibling Scholarships

EUL offers sibling discounts for prospective students for brothers and sisters. These students receive a 25% discount of their tuition fees while they study together. This type of scholarship is granted to students who are enrolled in any of the undergraduate programmes.

High Academic Achievement Scholarships

EUL students may be granted a "high academic achievement" scholarship based on their previous semester's academic results. The minimum requirement for students to be granted this type of scholarship is the achievement of a GPA of 3.50 out of 4.00

Sports Scholarships

Apart from the academic scholarships offered to students there are also sport and culture scholarships that may be granted. This is dependent on individual success in a sporting or cultural field. Candidates are chosen after considering their individual or team achievements attained nationally and internationally.

ENGLISH LANGUAGE REQUIREMENTS

Applicants are exempted from the English Preparatory School if they hold one of the following internationally recognised English language certificates:

	Undergraduate Programmes	Postgraduate Programmes
TOEFL Paper-Based Test (PBT)*	Minimum 513	Minimum 530
TOEFL Computer-Based Test (CBT)*	Minimum 183	Minimum 197
TOEFL iBT*	Minimum 65	Minimum 72
IELTS*	Minimum 5.5	Minimum 6.0
GCE "O" level	Minimum Grade "C"	Minimum Grade "B"
IGCSE	Minimum Grade "C"	Minimum Grade "B"
WAEC/WASSCE/SSSCE/NECO/NABTEB/ZIMSEC	C6	C5

English Proficiency Test

Students who are not exempted are required to take a proficiency test. The pass grade for the test is 70 out of 100 for all departments. Students who do not pass the proficiency test need to follow the English Preparatory School programme.

*Scores from both TOEFL and IELTS exams are valid for two years from the date of result.